

Regolamento di Halo 3

Halo 3 [2 vs 2]

Console: Xbox 360

Game Version: Halo 3 (with the most recent Xbox Live update)

Competition Mode: 2 vs 2

Type of Tournament: Winner-Loser Brackets (double elimination)

Winning Conditions: Win 2 out of 3 Gametypes

Total prize pool: 1.080 euros in gold coins.

Prize Pool: 1st 500 euros in gold coins, 2nd 260 euros in gold coins, 3rd 130 euros in gold coins, 4th 70 euros in gold coins, 5th 30 euros in gold coins, 6th 30 euros in gold coins, 7th 30 euros in gold coins, 8th 30 euros in gold coins (First 8 teams win prize).

Slots: 128 (64 teams)

-Game Settings-

Halo 3 Gametypes: 2v2

All Games

Primary Weapon = Battle Rifle

Custom Powerup Traits, Duration = 3 Seconds

Custom Powerup Traits, Damage Resistance = Invulnerable

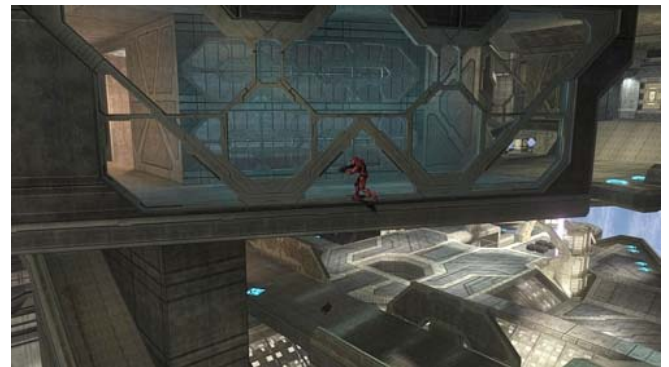
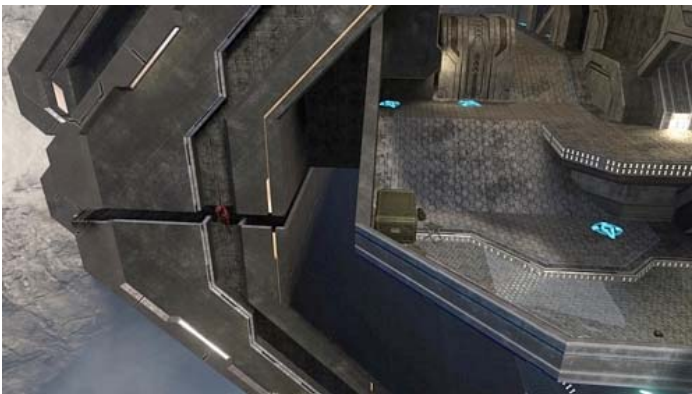
Custom Powerup Traits, Shield Multiplier = 3X Overshields

Custom Powerup Traits, Shield Recharge Rate = 200%

Custom Powerup Traits, Player Speed = Unchanged
Shield Recharge Rate = 90%
Damage Modifier = 110%
Player Speed = 110%
Motion Tracker Mode = Off
Suicide Penalty = None
Betrayal Penalty = None
Team Changing = Not Allowed
Time Limit = 10 Minutes
Vehicle Set = No Vehicles

Halo 3 Rules:

1. Getting out of the normal boundaries of the map is forbidden.



2. It is forbidden to get over the crane's Boxes in Amplified



3. Getting on top of the hallways over the Lobby in Construct is forbidden.



4. It is forbidden to get on top of the structure in the middle of Guardian.



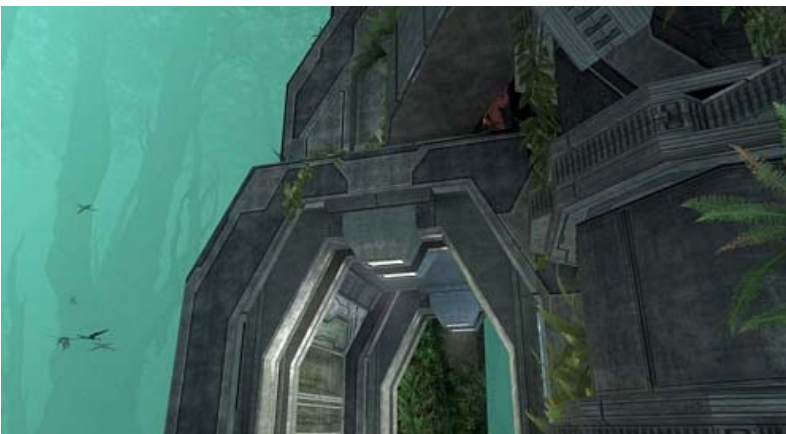
5. It is forbidden to get on top of the cornice over the Sniper Tower in Guardian..



6. It is forbidden to get on top of the cornices of Gold 2 on Guardian.



7. It is forbidden to get into the crack in front of the Blue 2 entrance in Guardian.



8. It is forbidden to get in the tree between Gold 1 and Blue 1 in Guardian.



9. It is forbidden to carry the ball on the cornice behind the Blue Ramp on Guardian.



10. It is forbidden to carry the ball on the cornice that faces the "L" on Guardian.



11. Getting in the penthouses over The Pit's bases is forbidden.



12. The use of the Elite armor is forbidden.

13. It is forbidden to exit a Team Slayer match..

14. It is forbidden to drop the Ball where is impossible to get it back.
Dropping the ball from the map to make a "Play Ball" is allowed though.

15. The CTF matches have a 15 minutes time. If after 15 minutes a team is winning and its flag is in the base, the game will be ended manually. If the score is on a draw after 15 minutes of match, the game will go on and the first team to score will win the game * (Sudden Death). If after the 30 minutes of maximum time limit (automatic Game Over) the game has not ended by Sudden death, the match will have to be re-played in Sudden Death*.

16. If, after the 15 minutes match, the score difference is 1 and the winning Team's flag is not in their base, the game will continue. If the losing Team scores BEFORE the flag has returned to the base, the game will go on in Sudden Death*, but if the winning team gets back the flag, the match is in Game Over.